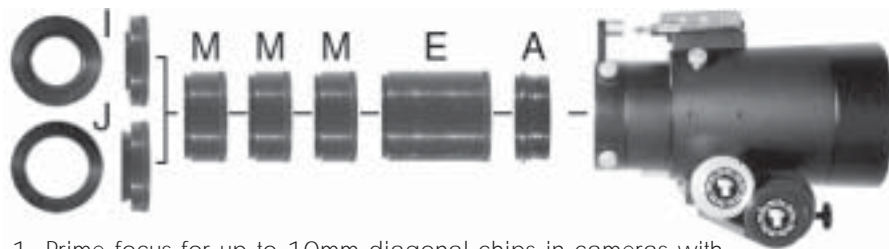


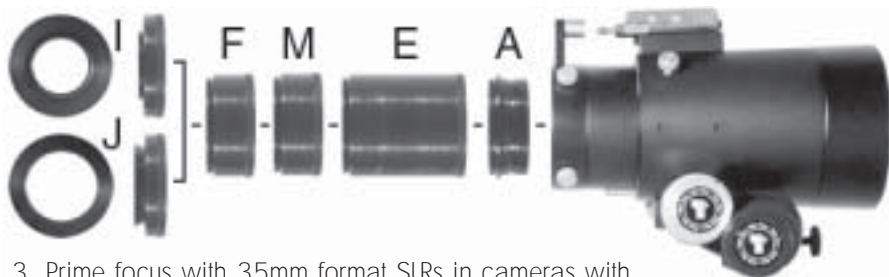
Component Recommendations for Top Performance at Prime Focus								
	Recommended Maximum CCD/film diagonal	Speed	Focal Length	Field of View	Camera Connector	Additional Spacer to match 55mm reference	Accessory Lens	Spacer length from focuser drawtube
1	Up to 10mm	f/8.6	880mm	0.65°	T-ring (TRG-1072) or Wide T-Ring (CWT-1070)	X	X	6.8" (3) TLD-1000 (1) TLE-1076
2	40mm (SBIG STL series cameras)	f/6.9	704mm	3.3°	SBIG STL Series (STL-1071)	0.75" (1) TLA-0250 (1) TLC-0500	0.8X Reducer/Flattener (RFL-4087)	4.8" (1) TLD-1000 (1) TLE-1076
3	40mm (SLR Cameras up to 35mm format)	f/6.9	704mm	3.3°	T-ring (TRG-1072) or Wide T-Ring (CWT-1070)	X	0.8X Reducer/Flattener (RFL-4087)	4.8" (1) TLD-1000 (1) TLE-1076



1. Prime focus for up to 10mm diagonal chips in cameras with 55mm chip to T-Ring distance.



2. Prime focus with SBIG STL series cameras



3. Prime focus with 35mm format SLRs in cameras with 55mm chip to T-Ring distance.

#### Accessories Key

- A. Imaging System Adapter (Supplied Standard)
- E. **TLE-1076** - 3.8" long threaded extension for photography
- F. **RFL-4087** - 0.8x Reducer/Flattener
- G. **TLA-0250** 0.25" long threaded extension
- H. **STL-1071** SBIG STL series adapter
- I. **TRG-1072** Standard T-Ring adapter
- J. **CWT-1070** Canon Wide T Adapter
- K. **TLB-0375** 0.375" long threaded extension
- L. **TLC-0500** 0.500" long threaded extension
- M. **TLD-1000** 1.000" long threaded extension

